

# CROOKED CREEK WATERSHED PROJECT COSTSHARE UP DATE

CROOKED CREEK  
CONSERVATION  
DISTRICT



# CROOKED CREEK WATER SHED PROJECT

- ❖ CROOKED CREEK CONSERVATION
- ❖ ARKANSAS NATURAL RESOURCE COMMISSION
- ❖ EPA SECTION 319 OF THE CLEAN WATER ACT

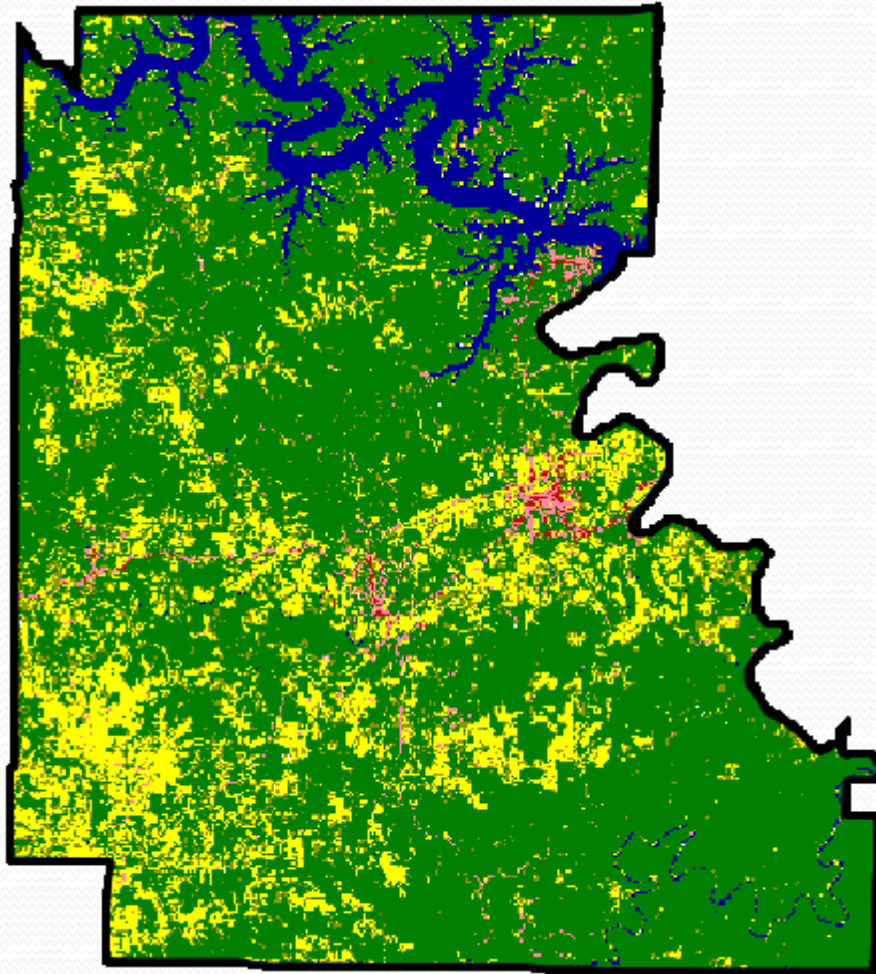
# Crooked Creek Water Shed Marion County





# Marion County

## Land Use



**Forest: 68.1%**  
**Grassland: 15.2%**  
**Transitional: 8.0%**  
**Water: 6.6%**  
**Suburban: 1.6%**  
**Urban : 0.4%**  
**Cropland: 0.1%**



# Best Management Practices

- ❖ WATERERING FACILITY
- ❖ PIPELINE
- ❖ HEAVY USE AREA
- ❖ PASTURE AND HAYLAND PLANTING
- ❖ BRUSH MANAGEMANT
- ❖ FENCE
- ❖ PONDS

# TIRE SPRING TANK WITH HEAVY USE AREA

USING USED  
TIRES SAVES  
LANDFILLS AND  
IS A CHEAPER  
AND SAFE  
WATER SYSTEM  
FOR FARMERS





Used Tire water tank in fence line with float and freeze vales





# Concrete Spring Box





























# FARMER USING ONE OF THREE NO-TILLS DISTRICT OFFERS FOR RENT





# Forage & Bio-mass Improvement





# BEFORE AND AFTER BRUSH MANAGEMENT









# Fencing off Crooked Creek

























158 People had a Roast Beef Dinner and listened to all the Speakers













58 People Attended with a light rain all Day













The Morning Finished with a Pulled Pork Lunch





# PROJECT GOALS

- ❖ **150 Conservation Plans covering 42,150 acres**
- ❖ **Provide Technical Assistance**
- ❖ **Good Working relationship with Area farmers.**
- ❖ **6.6 Miles of Stream Bank with voluntary livestock exclusion.**





# RESULTS

- ❖ 64 Conservation Plans Written.
- ❖ 100 % of Cost Share Funds In The Landowner Pockets.
- ❖ 34 BMPs Implemented on Marion County Farms
- ❖ 6 Water systems & 4050 Feet Pipeline Completed
- ❖ 275 Acres Brush-Management Sprayed
- ❖ 284 Acres of Forage & Bio Mass Planting
- ❖ 5.6 Miles of Cross Fences
- ❖ 3050 Ft. One Farmer Fenced off Crooked Creek



# GETTING THE WORD TO FARMERS

- **Word of Mouth Among Farmers**
- **Writing Weekly Newspaper Articles**
- **Newsletters**
- **Radio & TV Spots**
- **Field Days**
- **Pasture Conferences & Dinners**
- **Magazine Articles**
- **Booths at Marion County Fair**



# ANY QUESTIONS

